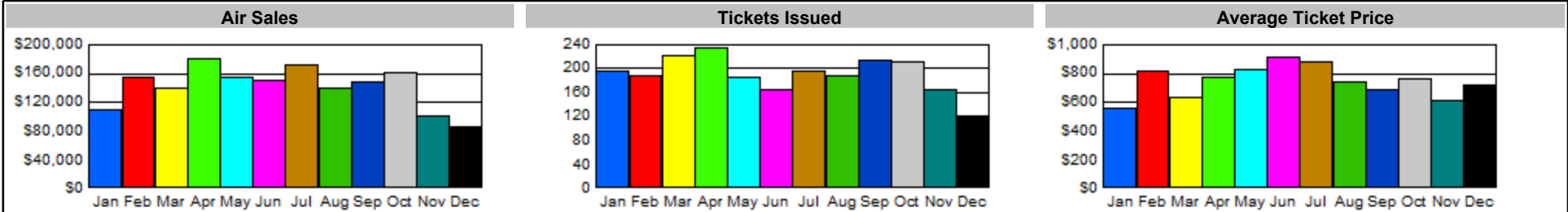
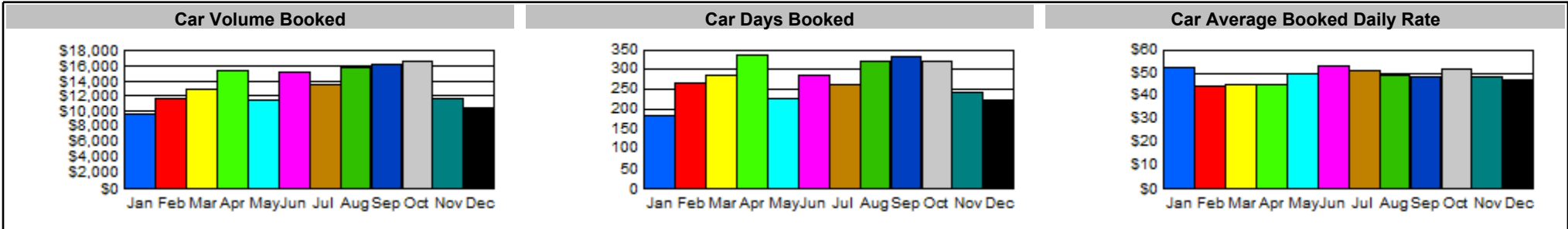


## Graphic Executive Summary



\*\* Graphs include sales only for Air and and Rail transactions. Refunds, Exchanges and Voids are excluded.

12/01/2010 to 12/31/2010			01/01/2010 to 12/31/2010			12/01/2010 to 12/31/2010			12/01/2010 to 12/31/2010			
<b>Tickets</b>	Trans. 119	Amount \$85,037	<b>Tickets</b>	Trans. 2,283	Amount \$1,693,567	<b>Top 5 Market Pairs</b>			<b>Trips</b>	<b>Base Amt.</b>	<b>Top 5 Val. Carriers</b>	
<b>Refunds</b>	1	\$(345)	<b>Refunds</b>	25	\$(69,125)	Berlin-Tegel-Charlotte			10	\$18,786	USAIRWAYS	
<b>Exchanges</b>	8	\$1,497	<b>Exchanges</b>	252	\$64,901	Charlotte-Memphis			9	\$3,740	DELTA AIR LINES	
<b>Voids</b>	7	Avg. \$715	<b>Voids</b>	124	Avg. \$742	Charlotte-Louisville			7	\$2,496	AIR CANADA	
						Charlotte-Detroit			6	\$1,439	SOUTHWEST	
						Albany-Berlin-Tegel			4	\$2,802	CONTINENTAL	



12/01/2010 to 12/31/2010		01/01/2010 to 12/31/2010		12/01/2010 to 12/31/2010		01/01/2010 to 12/31/2010		12/01/2010 to 12/31/2010		12/01/2010 to 12/31/2010	
<b>Cars Booked</b>	67	1,013	<b>Hotels Booked</b>	101	2,022	<b>Top 4 Car Co's</b>		<b>Days</b>	<b>Volume</b>	<b>Top 4 Hotel Properties</b>	
<b>Car Days</b>	223	3,292	<b>Hotel Nights</b>	265	5,038	AVIS RENT A		141	\$6,590	HOLIDAY INN ROCK HILL	
<b>Car Volume</b>	\$10,558	\$160,075	<b>Hotel Volume</b>	\$25,866	\$488,088	HERTZ RENT A		55	\$2,511	HAMPTON INN CLARKSV	
<b>Car Avg. Rate</b>	\$47.35	\$48.63	<b>Hotel Avg. Rate</b>	\$97.61	\$96.88	NATIONAL CAR		22	\$1,132	HAMPTON WATERVILLE	
						ALAMO CAR		4	\$302	HOLIDAY INN EXPRESS	

